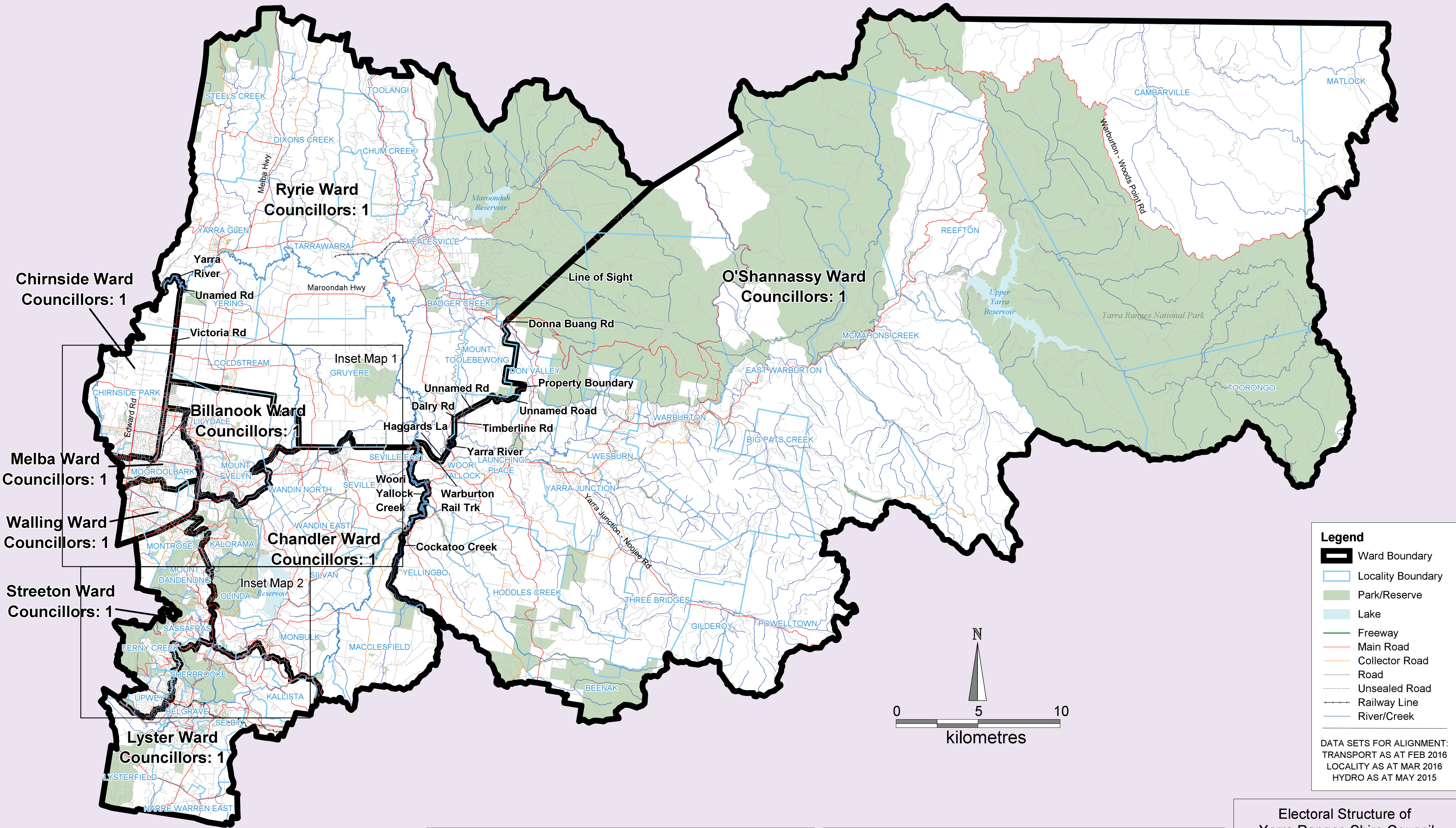


Yarra Ranges Shire Council

ELECTORAL STRUCTURE OF YARRA RANGES SHIRE COUNCIL

NOTE: By Order in Council made under section 220Q(k) of the Local Government Act 1989, the boundaries of the wards of Yarra Ranges Shire Council are fixed as described in this plan.



I certify that the electoral boundaries shown on this map have been aligned to Vicmap data by the Victorian Electoral Commission to represent the boundaries for Yarra Ranges Shire Council as approved by the Minister for Local Government in April 2016.

Warwick Gately AM, Electoral Commissioner



Map prepared by the Victorian Electoral Commission
Vicmap spatial data provided by Department of Environment, Land, Water & Planning
Parks digital data used with the permission of Parks Victoria
Copyright © 2016 - State Government Victoria



Disclaimer: This content is provided for information purposes only. While every effort has been made to ensure accuracy and authenticity of the content, the Victorian Government does not accept any liability to any person for the information provided

Electoral Structure of
Yarra Ranges Shire Council

LEGL./15-514

Map 1 of 3

